

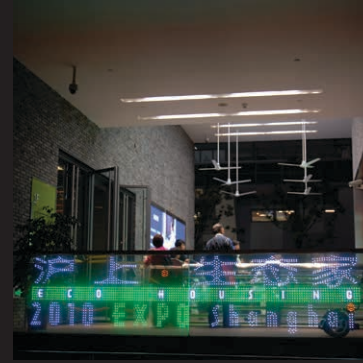


## CASE STUDIES

A large, abstract graphic on the right side of the page, composed of several overlapping triangles in various shades of yellow and gold, creating a faceted, crystalline effect.

“ we innovate  
and continually develop our products,  
introducing new and unique ideas  
and methods ”

# CASE STUDIES



# UAE

## BARCLAYS WEALTH

Replacing 50W halogen lamps throughout these Barclays Wealth offices saves over 6kW of energy and ensures that the offices look perfect for clients every day. The existing dimming control system remained in place as did the twin directional fixtures.



ELR35



ARCA-3  
DUO



# UAE

## MOVENPICK HOTEL

When renovating the lobby at the Movenpick Hotel a decision was made to be as energy efficient as possible. With over 165 halogen lamps specified energy consumption was going to be high. ELR lamps were able to save 64kW of energy but use the same style fixture already chosen.



• ELR50



VEGA



# UAE ARCHCORP

During this office refurbishment the client wanted to achieve LEED certification to outline their environmental awareness. Using ELR LED lights was able to contribute significantly to this and the lights were easily linked into the specialist lighting control system.



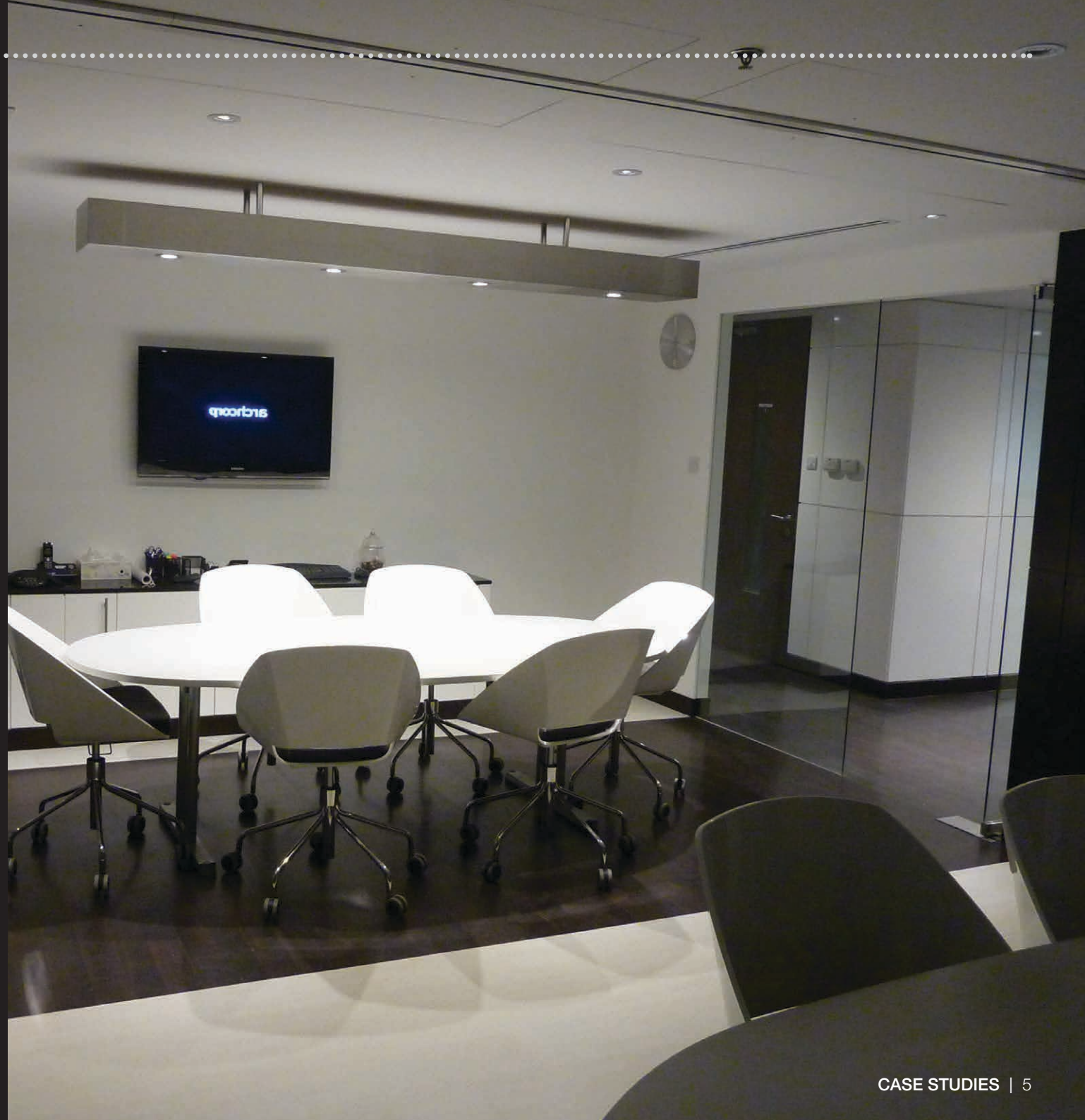
● ELR35



● ELR50

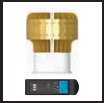


VEGA



# CHINA SHANGHAI EXPO

The main entrance of the “Eco Housing” exhibition at World Expo 2010 in Shanghai was illuminated with ELR LED light engines. In combination with medium flood beam angles it managed to light up the area uniformly from the 8m height ceiling, with stray lights illuminating the beautifully built stone wall. The benefits of LED lighting has perfectly matched the exhibition motto - “Better city, better life”.



● ELR50



VEGA



# HONG KONG CATHAY PACIFIC

The high ceiling, expensive maintenance and high lux requirement all contributed to the decision to choose ELR. Cathay Pacific's Hong Kong offices installed both ELR50 and ELR100 lamps in their high lobby ceiling, providing the low energy and long life solution to their dramatic entrance.



● ELR50



● ELR100



VEGA



PIAZZO-6



# MALAYSIA

## GENTING FIRST WORLD HOTEL

Refurbishment of famous casino hotel with designer touch. Featured ceiling design with hidden Canos light fixtures, couple with ELR50C series and phase dimmable LED driver.



ELR50



CANOS





# CHINA MOONSHADOW

Newly built 200 seats theatre and seminar hall with Vasari-4 fixtures and ELR100 Pro light engines. The Strand's lighting control system control ELR's phase dimmable driver perfectly from <1% - 100%.



● ELR100



VASARI-4



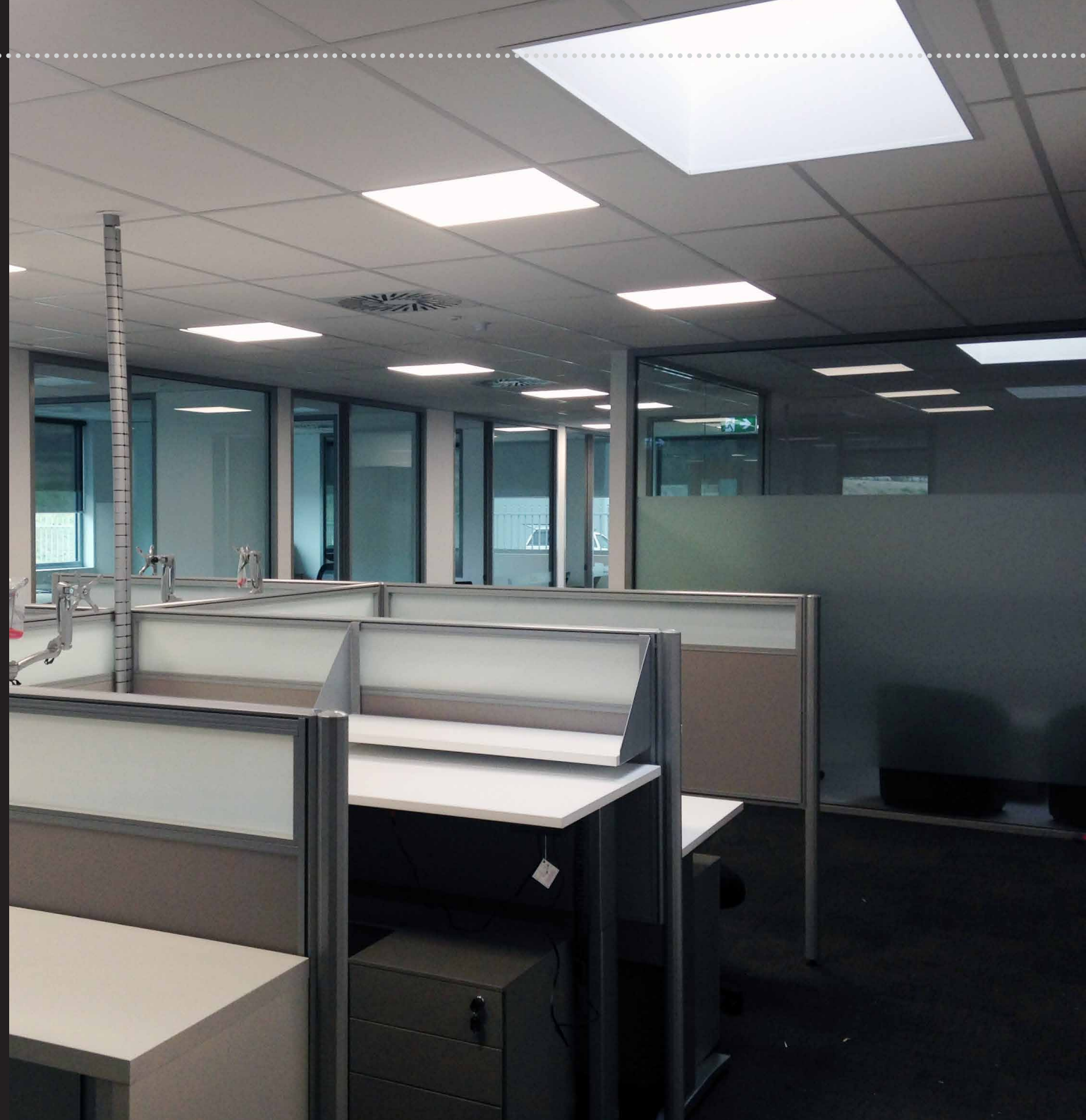
# AUSTRALIA

## TOLL FREIGHT OFFICE

Toll Freight's new offices renovated with Plana-ECO series with phase dimmable LED driver.



PLANA ECO



# AUSTRALIA

## BWINSTONE

Newly built hotel with various light fixtures to suit different interior design. With the same ceiling height, all LED modules are kept at 12 Watts ELR50 classic series, and different light fixtures were used from round, square downlight and surface mounted.



ELR50



ARCA-3  
UNO



CANOS



CARDON



# KOREA CHURCH

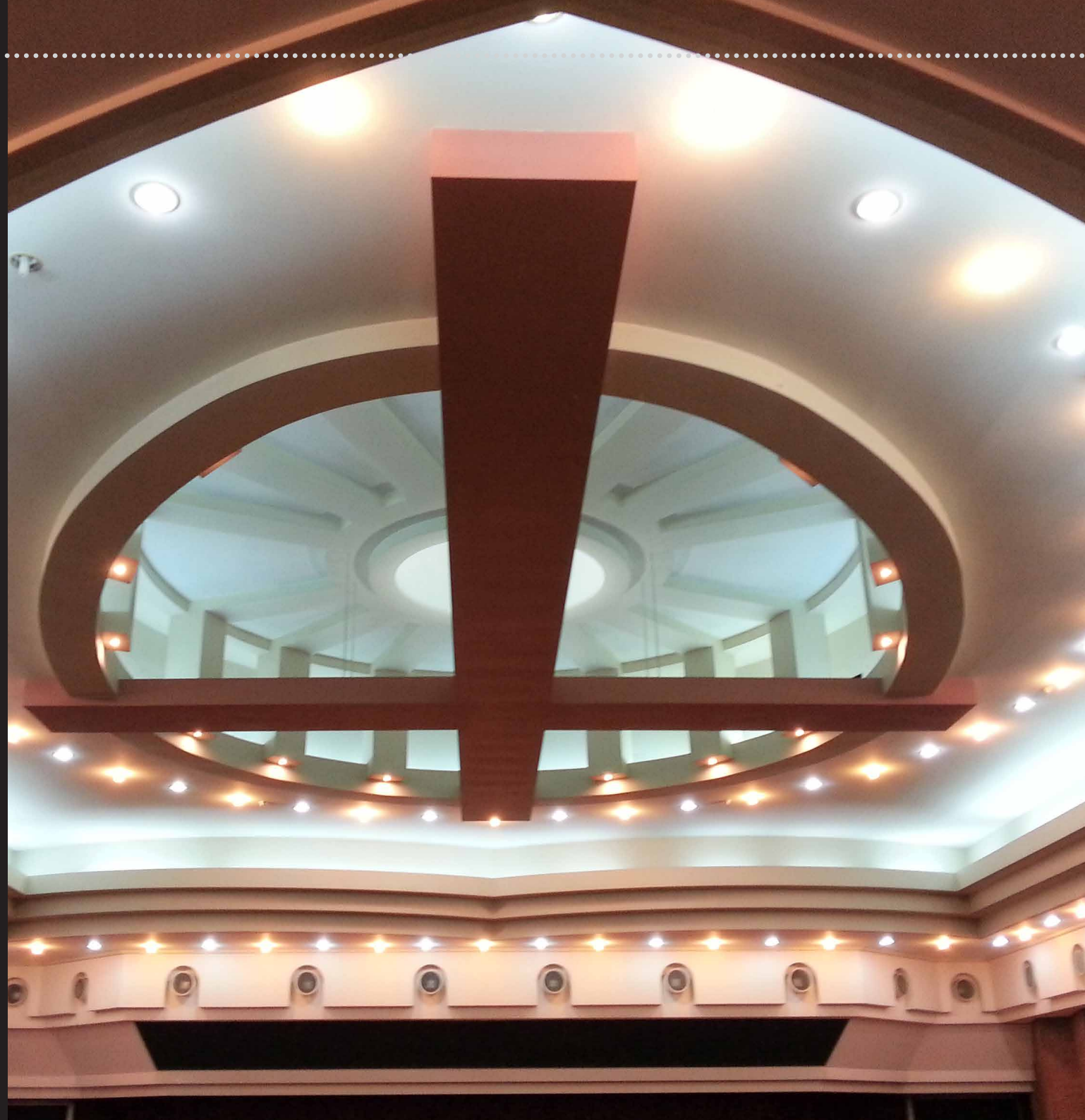
Newly built church featured ceiling with Dome-4 and Dome-6 series.



DOME 4



DOME 6



# MALAYSIA

## KL CHURCH

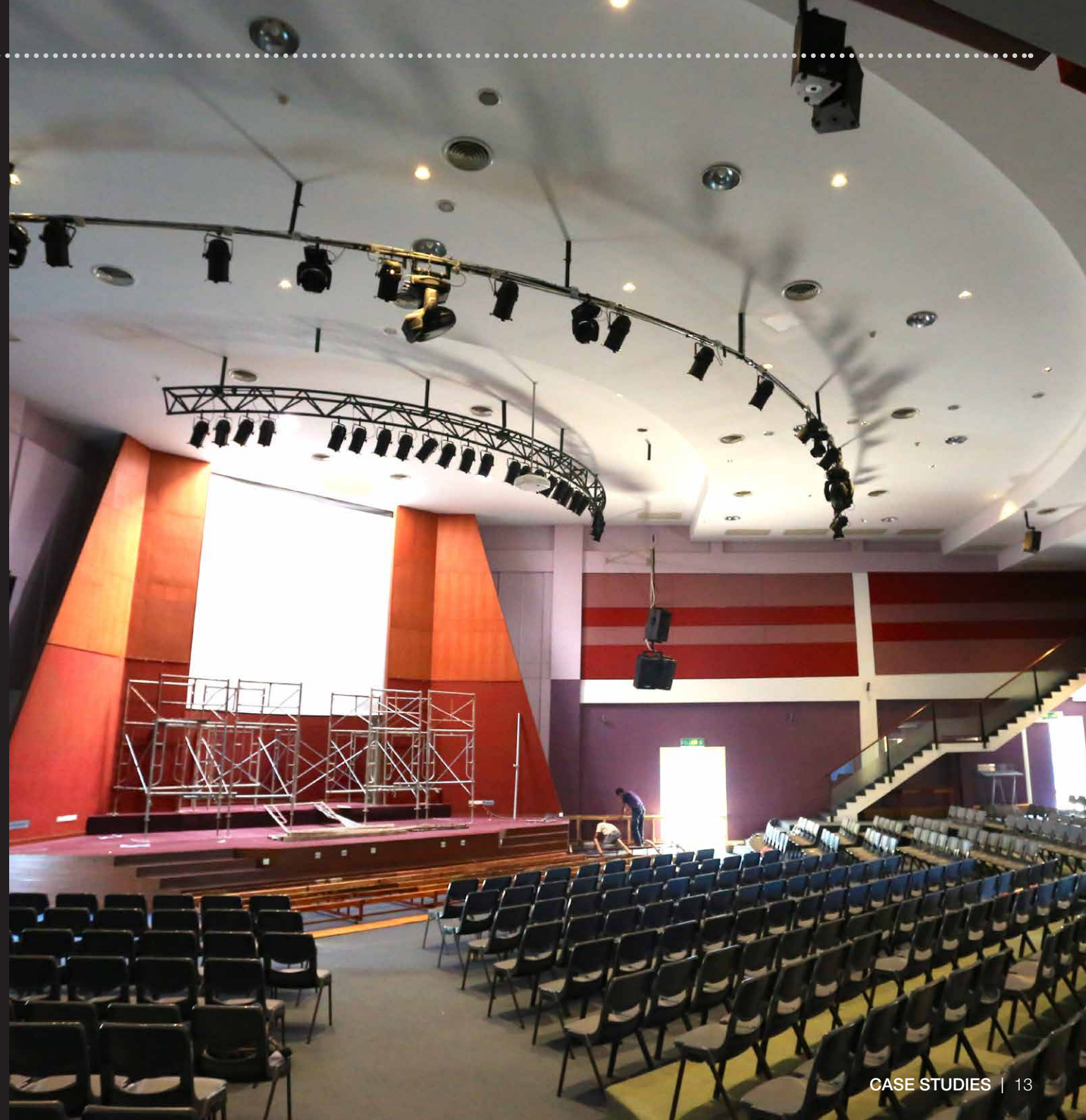
Refurbishment of church's hall with 400 seats. PIAZZO-4 with ELR100 Pro series. The phase dimmable LED driver work well with Strand's lighting control system to control alongside the stage lighting through one light jockey.



ELR100



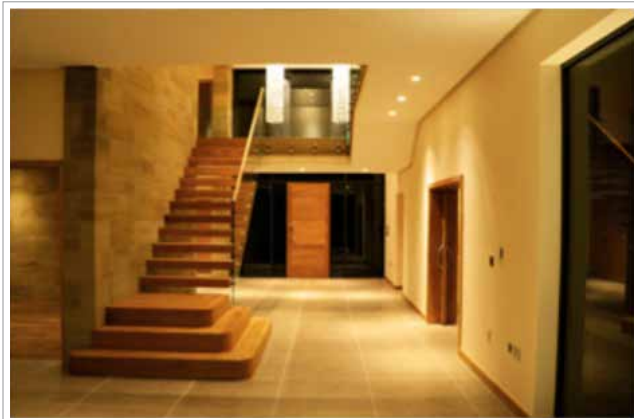
PIAZZO-4



# OTHER PROJECTS



*Luxury House*



# OTHER PROJECTS

  
SHANGRI-LA



*Saffire Hotel, Australia*

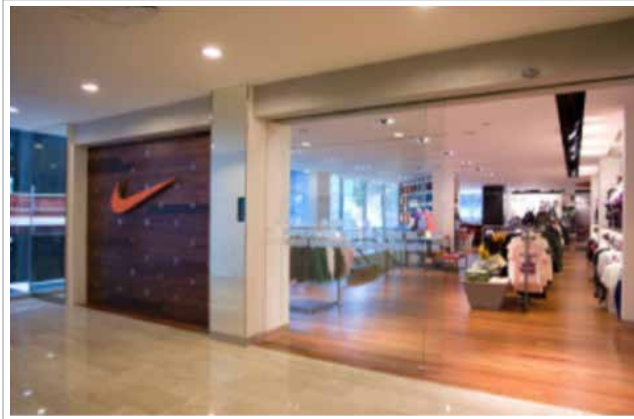
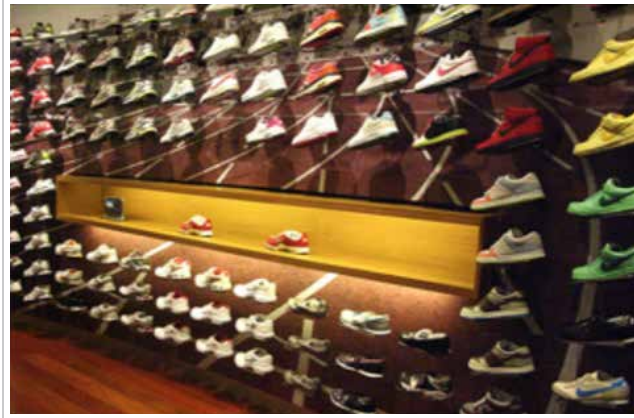




STOKERS<sup>®</sup>  
FINE FURNITURE

NIKE

HOUSING UNITS



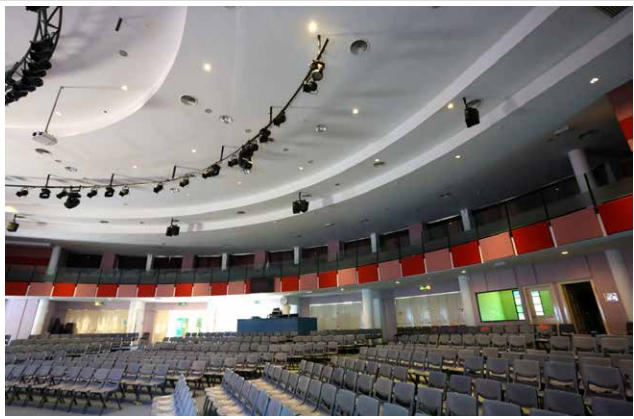
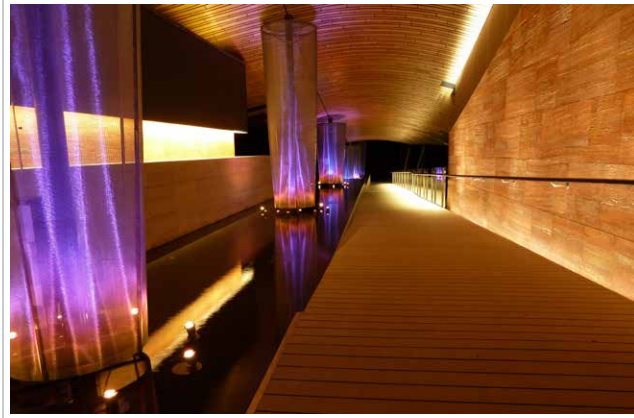
# OTHER PROJECTS

ATLANTIS  
THE PALM, DUBAI



Radisson BLU





OUR  
USERS





**ELR UNITED KINGDOM**

✉: [uk@elr-group.com](mailto:uk@elr-group.com)

**ELR EUROPE**

✉: [europa@elr-group.com](mailto:europa@elr-group.com)

**ELR AUSTRALIA**

✉: [au@elr-group.com](mailto:au@elr-group.com)

**ELR MALAYSIA**

✉: [malaysia@elr-group.com](mailto:malaysia@elr-group.com)

**ELR CHINA**

✉: [china@elr-group.com](mailto:china@elr-group.com)

**ELR HONG KONG**

✉: [hk@elr-group.com](mailto:hk@elr-group.com)

**ELR INDIA**

✉: [india@elr-group.com](mailto:india@elr-group.com)

**ELR UAE**

✉: [uae@elr-group.com](mailto:uae@elr-group.com)