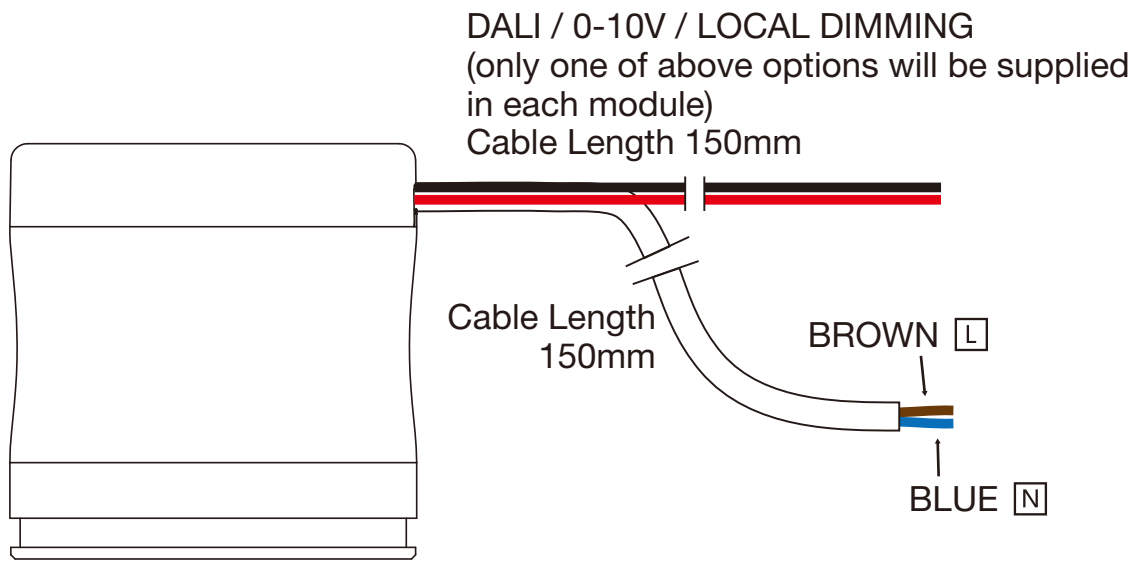


**IMPORTANT!!!**

FOLLOW THE BROWN FOR LINE [L], BLUE FOR NEUTRAL [N].

DALI : DA+ DA-, NO POLARITY  
0-10V : RED FOR "+", BLACK FOR "-"  
LOCAL DIMMING : USE 100K POTENTIOMETER



**SAFETY WARNING**

- Product **MUST** be installed by a licensed electrician in accordance with local standards.
- LED lamp **MUST ONLY** be connected to supplied ELR constant current LED driver. It is not compatible with any other type of driver. Failure to adhere to this may damage fitting and will void warranty.
- Ensure mains supply is not energised and/or disconnected prior to installation and connected/disconnection of lamp from driver.
- This fitting must not be 'meggered' or connected during any in-circuit testing.
- No user serviceable parts. Do not attempt to disassemble or repair lamp or driver.
- Do not use in flammable or explosive environments.
- Do not attempt to modify fitting or supplied wiring in any way.

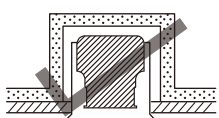
**DIMMER COMPATIBILITY DECLARATION**

The ELR Light Engines is designed for industry and home commonly used standard phase dimmer for best lighting effect achievement and provide additional values to our customer.

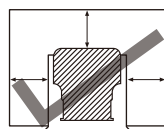
However with thousands of dimmer models available in the market today, we cannot guarantee 100% compatibility. In order to avoid disappointment, our best advise is to use dimmer models that have been tested by us. The latest information of dimming compatibility will be available within ELR Dimmer Compatibility Card and can be obtained through our website and your local distributors.

If you have any dimmer model that is not within our Dimmer Compatibility Card, please kindly contact us and send in your dimmer to get tested. We will response to you within the shortest possible time and advise you about the compatibility to our Light Engines.

ELR's will not be responsible for all losses due to the incompatibility of the dimmer to our Light Engines. Incompatibility includes abnormal operation, i.e flicker, throb, delayed on/off, failure, narrow dimming ranges etc. and not limited to the above mentioned conditions.



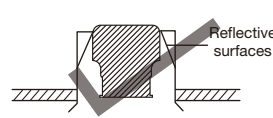
Insulation Mateial



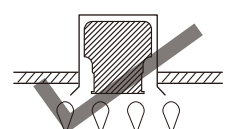
Narrow Space



Enclosed Space

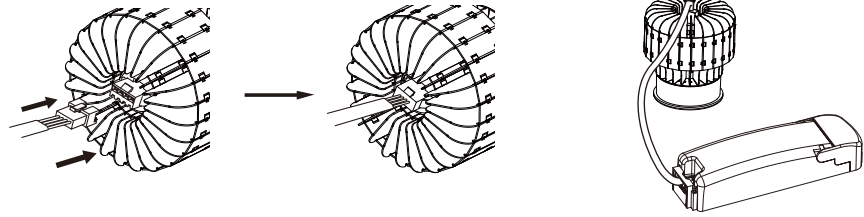


Reflection Mateial

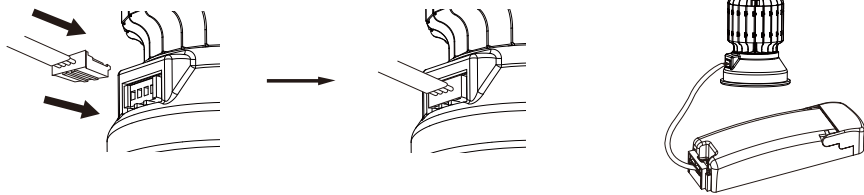


Wet Area

ELR 100C, 100P, 300P, 500P

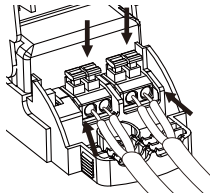


ELR 50C, 35P, 50P



### IMPORTANT!!!

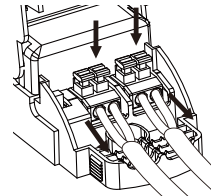
FOLLOW THE LINE **L**, NEUTRAL **N**, POSITION AS PRINTED ON THE LED DRIVER.  
FOLLOW THE CONTROL SIGNAL CABLE "+, -" OR "DA" POSITION AS PRINTED ON THE LED DRIVER



#### To INSTALL:

For soft multi stranded wires, push down the level before insert the trimmed wires into the connector. Release the level after the wires is in place.

For hard multi stranded or single stranded, simply push in the trimmed wires into the connector.



#### To RELEASE:

Push the level down and pull the wires out from the connector.

### SAFETY WARNING

- Product **MUST** be installed by a licensed electrician in accordance with local standards.
- LED lamp **MUST ONLY** be connected to supplied ELR constant current LED driver. It is not compatible with any other type of driver. Failure to adhere to this may damage fitting and will void warranty.
- **DO NOT COVER** lamp or driver under any circumstance.
- Ensure mains supply is not energised and/or disconnected prior to installation and connected/disconnection of lamp from driver.
- This fitting must not be 'meggered' or connected during any in-circuit testing.
- No user serviceable parts. Do not attempt to disassemble or repair lamp or driver.
- Do not use in flammable or explosive environments.
- Do not attempt to modify fitting or supplied wiring in any way.
- Allow suitable air flow and ventilation around the fitting.

### DIMMER COMPATIBILITY DECLARATION

The ELR Light Engines is designed for industry and home commonly used standard phase dimmer for best lighting effect achievement and provide additional values to our customer.

However with thousands of dimmer models available in the market today, we cannot guarantee 100% compatibility. In order to avoid disappointment, our best advise is to use dimmer models that have been tested by us. The latest information of dimming compatibility will be available within ELR Dimmer Compatibility Card and can be obtained through our website and your local distributors.

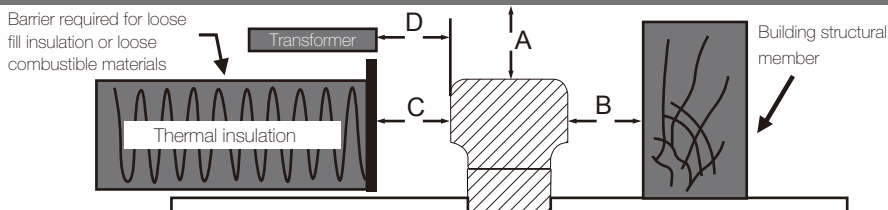
If you have any dimmer model that is not within our Dimmer Compatibility Card, please kindly contact us and send in your dimmer to get tested. We will response to you within the shortest possible time and advise you about the compatibility to our Light Engines.

ELR's will not be responsible for all losses due to the incompatibility of the dimmer to our Light Engines. Incompatibility includes abnormal operation, i.e flicker, throb, delayed on/off, failure, narrow dimming ranges etc. and not limited to the above mentioned conditions.

### INSTALLATION

- Suitable for indoor installation only.
- Disconnect mains before proceeding.
- Locate fitting in accordance with local standards. Refer to image below for clearances.

#### BUILDING ELEMENT ABOVE FITTING



#### Recessed luminaire

Dimension	LED Lamp
A - Clearance above luminaire	25mm
B - Side clearance to structural member	50mm
C - Clearance to thermal insulation	50mm
D - Clearance to supply transformer	25mm

**WARNING!** Use of ELR's light engine under the stated environments below will NOT be covered in our warranty.

