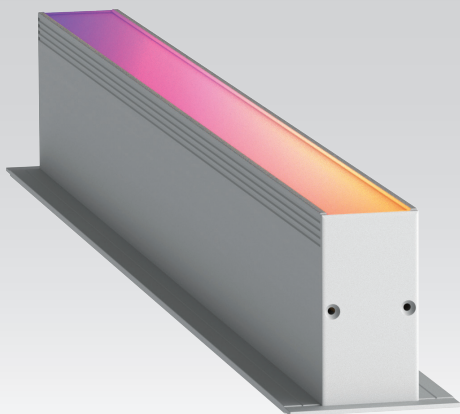




WP30F

PRESSURE PROOF 20 PIXELS PER METER
PIXEL CONTROL LINEAR LUMINAIRE



AVAILABLE OPTIONS

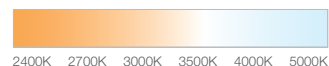
COLOUR OPTIONS

SILVER ANODIZED



CCT OPTIONS

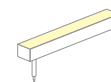
SINGLE CCT



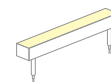
RGBW



WIRE END & EXIT CONFIGURATIONS OPTIONS

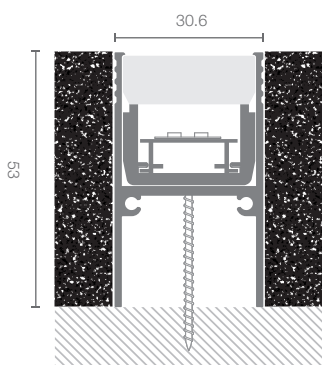


Single Wire End,
Rear Exit

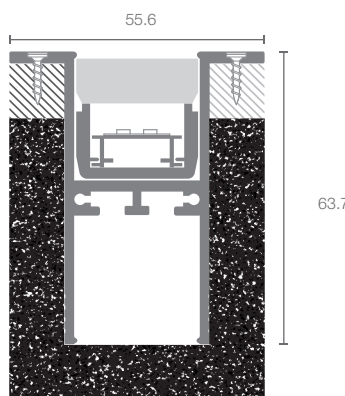


Double Wire End,
Rear Exit

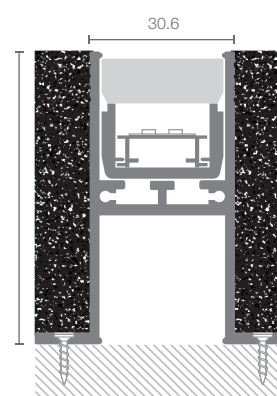
DIMENSIONS (MM)



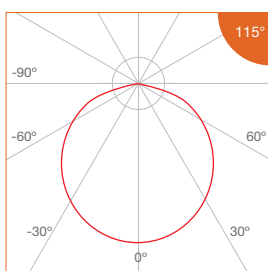
Recessed Trimless



Recessed Trim



PHOTOMETRICS





Pressure Proof Luminaire_Facade Lighting

Profile Type	30.6mm width aluminium linear profile
Profile Finishing	Silver Anodised
Cover	Diffused
Light Uniformity	Dot-less
Mounting	Recessed Trim, Recessed Trimless
Beam Angle	115°
Power Options	Single CCT - 20W/m, 15W/m, 10W/m, 5W/m RGBW - 20W/m, 15W/m, 10W/m, 5W/m
CRI	ProART (CRI-95) *Ra>90, R9>50
SDCM	3 step MacAdam ellipse binning
Lifetime	Up to 50,000 hours L80 lamp life at Ta = 25°C
Voltage	24V DC
Length Options	CCT: 508mm, 1008mm, 1508mm, 2008mm RGBW: 512mm, 1012mm, 1512mm, 2012mm
Operating Temperature	Ta (min) = -20°C, Ta (max) = +50°C
Wire Connection	Supplied with insulated IP67 wires and connector at 200mm length
IP Rating	IP67
IK Rating	IK10 (Can withstand 5kg of free fall object dropping from 0.4m height)
Profile LOR	47% (Frosted diffuser)

Media Specifications

Pixel Density	CCT: 20 Pixel per meter RGBW: 12 Pixel per meter
Control Method	DMX 512 - Pixel by Pixel
Cut per Stretch	CCT: 500mm (10 pixels), 1000mm (20 pixels), 1500mm (30 pixels), 2000mm (40 pixels) RGBW: 500mm (6 pixels), 1000mm (12 pixels), 1500mm (18 pixels), 2000mm (24 pixels)
Colour Temperature	2400K, 2700K, 3000K, 3500K, 4000K, 5000K RGBW(3000K), RGBW(6000K)

SPECIFICATIONS

• Single CCT

CCT	Efficacy (lm/W)	Luminous Flux per meter (lm/m)			
		20W/m	15W/m	10W/m	5W/m
2400K	42.8	857	642	428	214
2700K					
3000K	49.8	996	747	498	249
3500K					
4000K					
5000K	52.3	1046	784	523	261
Correction Factor		1.00	0.75	0.50	0.25

• RGBW

CCT	Efficacy (lm/W)	Luminous Flux per meter (lm/m)				RGB Wavelength (nm) / White CCT
		20W/m/Ch	15W/m/Ch	10W/m/Ch	5W/m/Ch	
Red	23.5	79 (@3.36W)	59 (@2.52W)	40 (@1.68W)	20 (@0.84W)	620 - 630
Green		170 (@4.76W)	128 (@3.57W)	85 (@2.38W)	43 (@1.19W)	
Blue	9.5	45 (@4.76W)	34 (@3.57W)	23 (@2.38W)	11 (@1.19W)	460 - 470
White		396 (@7.12W)	297 (@5.34W)	198 (@3.56W)	99 (@1.78W)	
Correction Factor		1.00	0.75	0.50	0.25	

ORDERING MATRIX

Profile	Finishing		Mounting		Cover		Length		LED Module Power & CCT				Wire End & Exit Configuration		Ingress Protection		
	SL	Silver Anodised	T	Trim Trimless	D	Diffused	508	508mm	20	20W/m	24	2400K	SR	Single Wire End, Rear Exit	IP67	IP67	
WP30F-20PIX	SL	Silver Anodised	T	Trim Trimless	D	Diffused	1008	1008mm	Single CCT	15	15W/m	27	2700K	DR	Double Wire End, Rear Exit		
							1508	1508mm		10	10W/m	30	3000K				
							2008	2008mm		5	5W/m	35	3500K				
										40	4000K						
										50	5000K						
							512	512mm	RGBW	20	20W/m	RGBW30	RGBW(3000K)				
							1012	1012mm		15	15W/m	RGBW60	RGBW(6000K)				
							1512	1512mm		10	10W/m						
							2012	2012mm		5	5W/m						

Example: WP30F-20PIX-SL-X-D-1008-5-30-SR-IP67

WP30F Profile, Pixel Control, 20 Pixels per meter, Silver Anodised, Trimless, Diffused cover, 1008mm, with FM6 - 5W/m, 3000K, Single Wire End at Rear Exit, IP67, Including 2 x End Cap