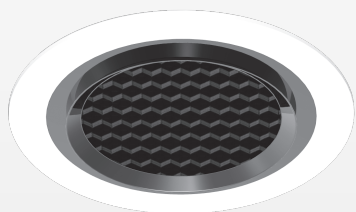


24CV Coin Hybrid Luminaires.

Coin Recessed and Coin Surface are series of LED module hybrid luminaires derived from ELR Coin low height LED module, which are also now available in 24C DC constant voltage, an expansion to the 24CV family that allows multiple luminaires to be driven by a single non-dim or phase / 0-10V / DALI / DMX dimmable driver.

The Coin 24CV Recessed and Coin 24CV Surface are puck lights equipped with built-in ATePS™ technology to protect the LED lifetime against abnormally high ambient temperature conditions, comes in ProART CRI~95 and various finishing colour combinations, are especially suitable in applications such as display shelves, kitchen cabinets and countertops, etc.



COIN 24CV RECESSED

Recessed mounted puck light



COIN 24CV SURFACE

Surface mounted puck light



Lumen Output

155lm



LED Power

2W



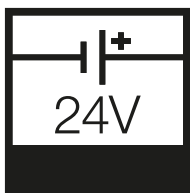
Lumen Output

349lm



LED Power

4.5W



24V DC Constant Voltage
Non-dim or Phase / 0-10V /
DALI / DMX Dimmable
LED Driver



Excellent cost savings. Quicker ROI. Quick installation.
Low maintenance.



Converging optical lens
maximising LOR



Built-in with Advanced
Thermal Protection System



ProART
Colour Rendition
CRI~95

[FIND OUT MORE](#)